

# JOURNAL OF THE CSXT® HISTORICAL SOCIETY

Volume 14 Number 2



## 2025 CONVENTION CHATTANOOGA

CSXTHS is not affiliated with CSX Transportation® and is a nonprofit corporation chartered under the laws of Kentucky.  
CSX Transportation ® and its logos are used here within with the written permission of CSX Transportation. ®

## **PRESIDENT'S MESSAGE**

We had a good 2025 convention at Chattanooga. Those who were not able to attend can enjoy highlights of the convention on the next pages of the Journal. Next year, 2026, we are tentatively planning to hold our CSXTHS convention in Nashville, Tennessee, in conjunction with the Louisville & Nashville Railroad Historical Society Convention. There should be a steam train ride. More in the next issue of the CSXTHS Journal.

The Massachusetts Bay Railroad Enthusiast has donated 41 boxes of railroad slides to our organization. Grayson Wilhoite, the CSXTHS' archivist, is starting to scan and catalog the slides.

We appreciate all the members who sent in scans of CSXT heritage units for display in this issue of the Journal. Hope you enjoy the photos.

Lots of positive feedback on the two Pumpkin locomotive issues. We need photos of CSXT Operation Red Block locomotives for a forthcoming CSXTHS Journal.

## **TABLE OF CONTENTS**

2025 Convention Report	page 3
CSXT Heritage Units	page 44
Along The Track	page 57
CSXT Car Condemning Guide	page 57
CSXT Locomotive Paint Guide	page 58
Two Family Line Survivors	page 59
2025 Santa Train Schedule	page 60
CSXT Today	page 61

**Front cover left to right: Charles Bogart, Jim Bergant,  
John Enyard, and John Jensen at the 2025 CSXTHS Convention**

## CSXTHS 2025 CONVENTION REPORT

Four members of the CSXT Historical Society joined with the Louisville & Nashville Railroad Historical Society on October 3 to 5, 2025, to railfan Chattanooga, Tennessee. On Friday morning there were three presentations: Preview of 2026 NMRA Convention in Chattanooga, modeling L&N freight cars, and CSXT Patio Yard to Corbin Yard. The afternoon saw us visiting the Tennessee Valley Railroad Museum (TVRM) to see the L&NHS and Southern Railway Historical Society archives building and tour the outdoor displays. The archive building, owned by TVRM, is leased to the two historical societies, while the lower floor houses the local NMRA chapter's model train layout. That evening Tim Andrews, President of TVRM, gave a talk on the history of the organization and its future plans.

Saturday saw us take a 75 mile train ride behind Southern Railway steam locomotive 4501 from Chattanooga to Summerville, Georgia, and back. We were treated to a dinner on board the train and got to watch TVRM turn the locomotive on the turntable at Summerville.

On Sunday morning we visited CSXT's Wauhatchie Yard and Pilgrim grain elevator. The afternoon saw us riding the Chattanooga Incline and railfanning Norfolk Southern Railway DeButts Yard from Coffey's Cliff. The 2025 conference ended at 4:00 PM with us scattering to head home.



Friday's presentation by Mont Switzer on L&N freight car loads





The Swap Room



Tim Andrews, President of the Tennessee Valley Museum was the dinner speaker and spoke on the history of TVRM.





**L&NHS and Southern Railway Historical Society archive building. L&N on left and SRHS on right. Downstairs is a model railroad club.**



**L&NHS main archive room**



**SRHS was just moving into their space**



**Model train layout downstairs**





**Above and below: The TVRM display yard**







The TVRM Depot



Southern Railway 5000 was pulling an excursion train.





**Nashville, Chattanooga & St. Louis Railroad #710 was pulling a local excursion train.  
Tennessee, Alabama & Georgia Railroad #80 was waiting assignment, and Norfolk  
Southern #6016 was rolling by with a unit grain train.**



**NC&SL 710 pulls from the depot.**





Above and below: TVRM workshop yard







Above and below: Southern Railway 4501







A close-up of Southern 4501



Chattanooga National Cemetery with the Andrews Raiders monument





Passing through the Chickamauga Battlefield



This car paced our train near Summerville, Georgia.





Mary Ann Bogart, Jim Bergant, and John Jensen wait for lunch to be served



At Summerville, preparing to turn Southern 4501





Turning Southern 4501 on the turntable at Summerville.







Passing by Lafayette, Georgia, home of the Chattanooga & Chickamauga Railroad.

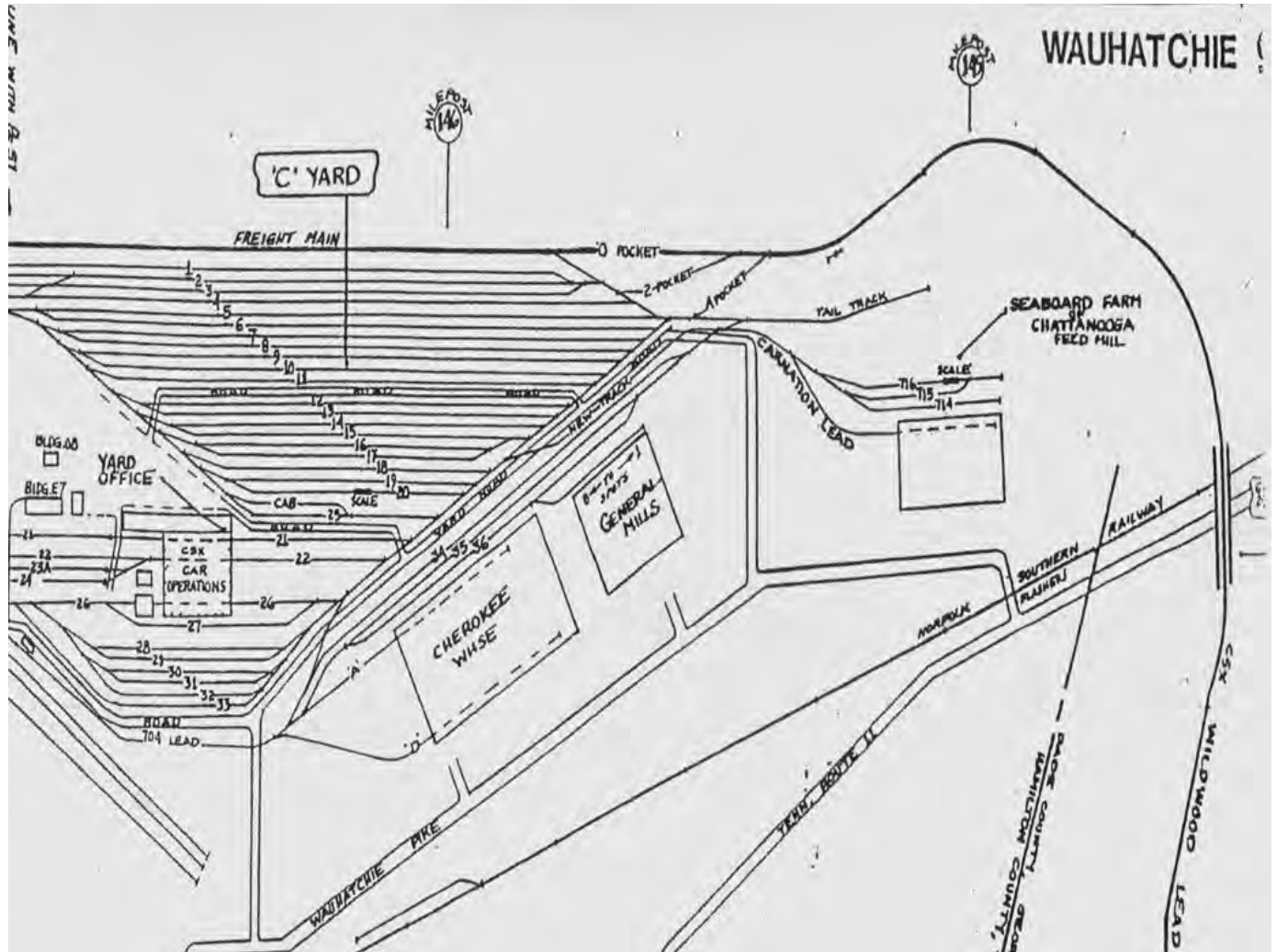






The signs that greeted us on arrival at CSXT Wauhatchie Yard.





Wauhatchie Yard layout presented to us.





Above and below: The Wauhatchie Yard office building with the Yard tower







Above and below: Inside the Wauhatchie tower **control room**







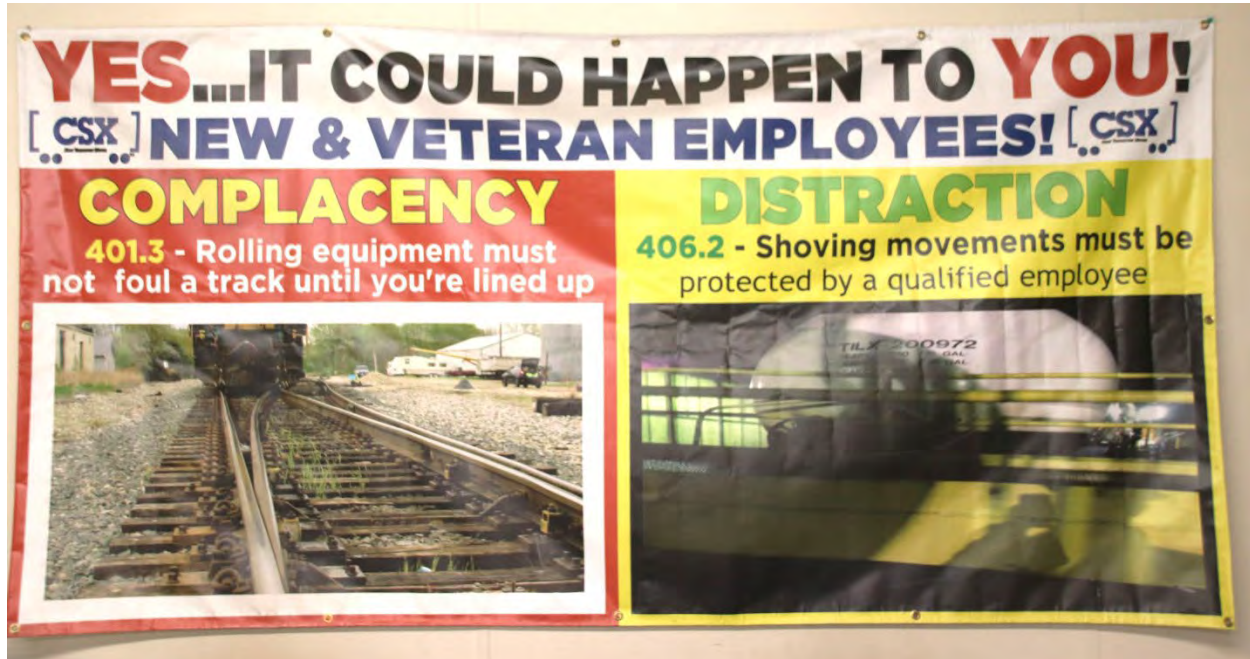
Close-up of the Wauhatchie tower control room track board



A view from the Wauhatchie Tower toward the new yard building.



Above and below: Safety notices on display in the crew room.







Above and below : Views west into Wauhatchie Yard







The far west end of Wauhatchie Yard

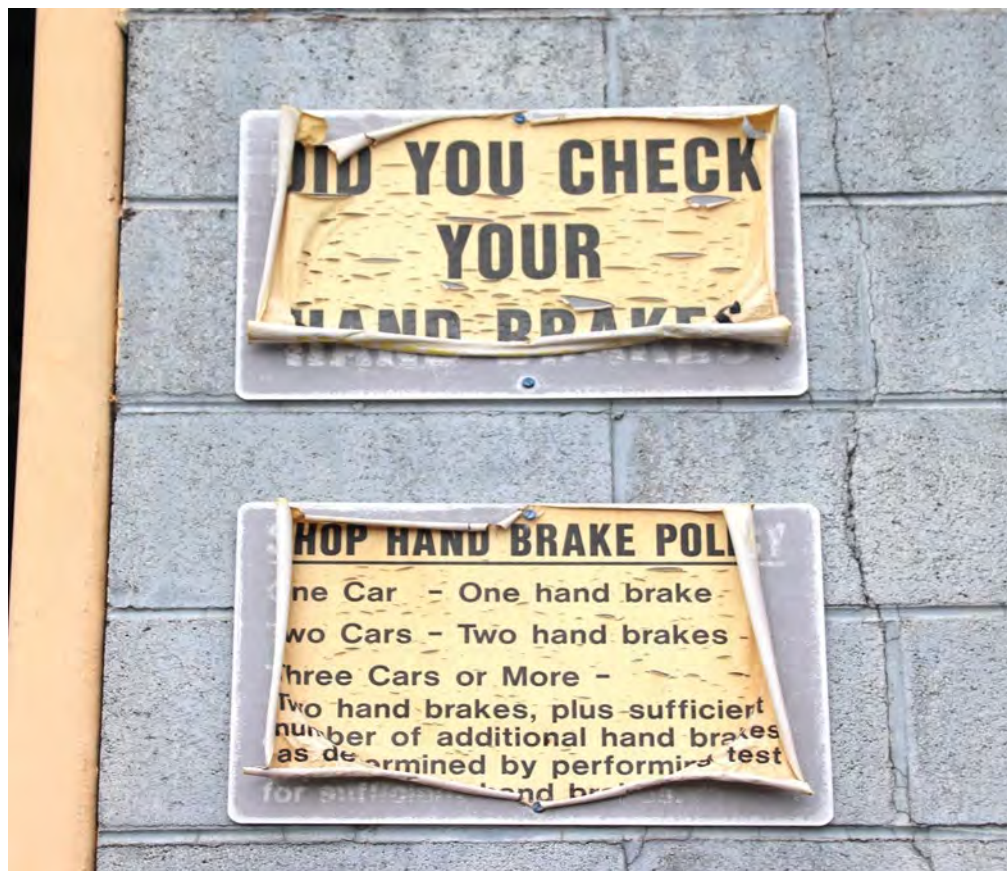


Sign on the Signal Gang Shop door





Above and below: Signage at the Wauhatchie Car Repair Shop







Above and below: The Wauhatchie Car Repair Shop







A variety of couplers sit on a rack outside the Wauhatchie Car Shop.



CSXT 2804 awaits her next job.



CSXT 6589 and CSXT 6600 have just been parked by their crew who have entered the Yard office to complete their paperwork for the day.



CSXT 2785, CSXT 2649 and CSXT 2774 along with CSXT L&N 41288 sit trackside.





Above and below: Views of L&N 41288, a Jorden Spreader



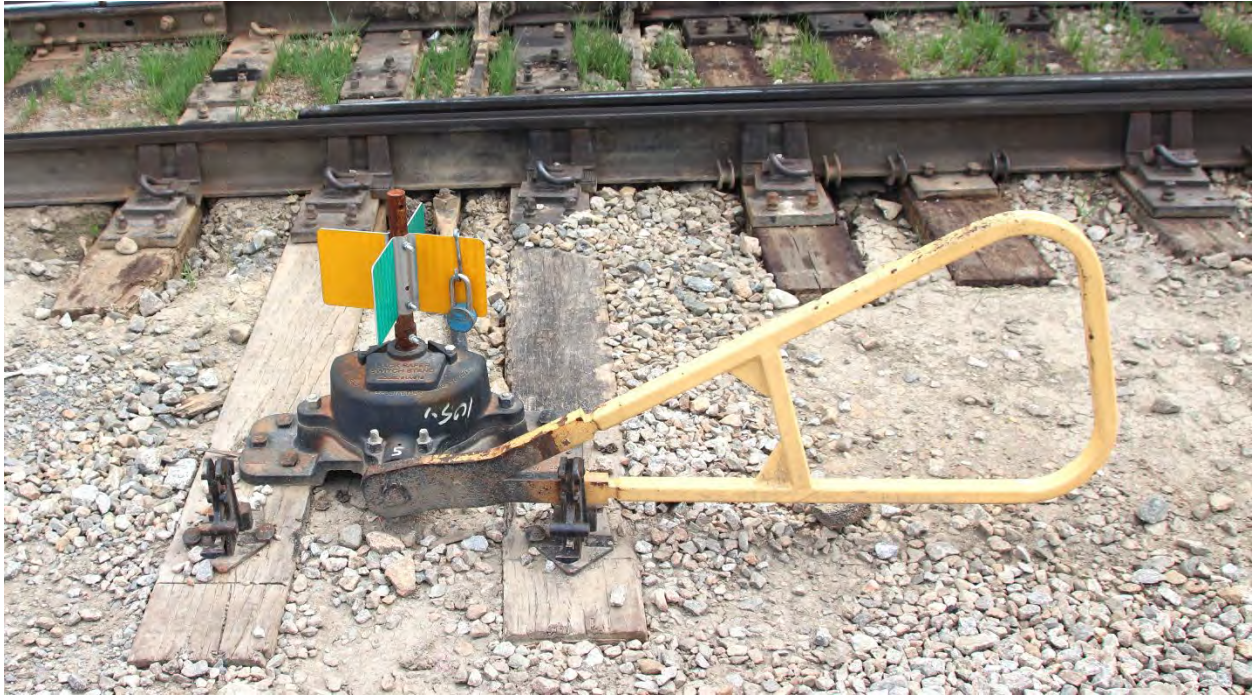




**Above and below: Views of the Wauchatchie shoving platform.**







Above and below: Blue flag signage.







**Above and below: The pump house for maintaining air pressure used for remote throwing of yard switches.**







Above and below: More views of the air pressure pump house.





Above and below: Some Wauchatchie Yard signage







Above and below: Close-up of Wauchatchie Yard air powered switches.







A view east into Wauchatchie Yard



CSXT 4323 and CSXT 8243, the yard switchers, were tied down during our visit.





CSXT 299318 stood in Wauchatchie Yard in fresh paint applied for a photo shot.



NYC 293100 sat in the Yard covered in typical graffiti paint.





Above and Below: Pilgrim's grain elevator is located at the west end of the Wauchatchie Yard.





Coffey's Cliff is located at the east end of Norfolk Southern Railway's DeButts Yard. Its physical address is 1900 Stuart Street. This address is a vacant lot at the end of Stuart Street, with 6 foot high weeds growing in it and a narrow dirt road cutting through. Some 100 feet down this dirt road, through impenetrable towering weeds, is Coffey's Cliff. Here is located a very small road turnaround, 20 feet by 20 feet. You might want to walk in before driving in to check if any parking is available and if you can turn your car around in the available area to exit. If you plan to spend some time at Coffey's Cliff, a folding chair is a necessary creature's comfort.

Coffey's Cliff is located some 20 feet above the track on a rock ledge created when a cut was made to provide access to what is now DeButts Yard. The nearest railroad track to Coffey's Cliff is a CSXT run through track. The remaining track is all NS. The view is down into the NS Yard. NS locomotives switching the Yard often pull up to Coffey's Cliff when making up trains. One also gets to view west bound NS trains entering the Yard and east bound NS trains leaving.



In this view a NS train is leaving the Yard; one is entering the Yard and one is making up a train.





Above and below: Views into DeButts Yard from Coffey's Cliff.







Above and below: The near track is CSXT. Unfortunately, we saw no CSXT train during our stay at Coffey's Cliff.







Above and below: NS action at Coffey's Cliff.





## Chattanooga Train Watching Guide

Louisville & Nashville Historical Society  
October 2025 Convention

---

*The Greater Chattanooga area offers an excellent variety of train-watching & photography locations – without driving long distances. This guide describes some of the better ones.*

**Tennessee Valley Railroad Museum, Chattanooga** – Trackside at the Grand Junction depot has an unobstructed view of the NS main line at CP-Jersey. Trains headed to Atlanta and Knoxville pass here.

**Tenbridge, Chattanooga** – NS CNO&TP double-track, main line bridge over the Tennessee River – I-75 to SR-153 W to SR-58 S – Photos are available from both sides of the river, but the best options are on the south side from TVA's Chickamauga Dam Tennessee River Park @ 4631 Amnicola Highway. Good for morning and afternoon light.

**North of Tenbridge** – NS CNO&TP main line towards Cincinnati – Numerous photo locations to be found by taking SR-153 from I-75 across the Tennessee River, then follow US-27 North to the areas around Hixon and Soddy Daisy

**Coffey's Cliff, Chattanooga** – Regarded as the top railfanning spot in Chattanooga -- Best for morning photos – CSX's W&A Sub. and east end of NS' DeButts Yard – 1900 Stuart St. – end of Stuart at Roanoke Ave., off Wilder St. Take a short gravel road at the end of Stuart to the Cliff. Not recommended after dark.

**Ooltewah** – I-75 to US-11 & 64 East –Bootlegger's Crossing off Ooltewah-Cemetery Road. There is a large parking area near the crossing.

**Wauhatchie** – Overlook Park at 200 Garden Road – Cummings Highway and Old Wauhatchie Pike – South end of CSX's Wauhatchie Yard; best in morning light.

**Wauhatchie** – CSX's primary yard at 400 Wauhatchie Pike; several public road views. Also, the junction where NS trains to Memphis diverge from their AGS line to Birmingham and operate over CSX's Nashville main line as far as Stevenson, Ala.

**Whiteside, TN** – CSX main line with NS traffic – Running Water Creek bridge – Follow I-24 West to SR-134 South of Whiteside

**Nickajack Lake** – CSX with NS traffic – numerous photo locations – I-24 West to SR-156 – Continue West on SR-156 to South Pittsburgh, TN and the Sequatchie Valley Railroad (former L&N branch line)

**Bridgeport, AL** – CSX with NS traffic - Restored L&N depot – I-24 West to SR-72 South.



**Stevenson, AL** – Restored station with museum at junction where NS' traffic to Memphis exits CSX's Chattanooga-Nashville main line – I-24 West to SR-72 South.

**Cohutta, GA** – NS lines from Chattanooga, Knoxville, and Atlanta converge here – Excellent photo locations – I-24 East to SR-320.

**Dalton, GA** – Busy CSX W&A Sub and NS Atlanta North District cross at grade in downtown Dalton – I-75 to exit 333, West on Walnut Ave., 2.3 miles, left on Thorton Ave., right on Morris St. to former SR depot. Both a bridge and a parking deck, located just to the north of the depot are good locations for overhead shots. Virtual Railfan camera site:

**Tunnel Hill, GA** – CSX W&A Sub. – I-75 S to Exit 336, SR-41 N 4.5 miles, right on Oak St. – Shots available from the north portal of tunnel.

---

## **CSX Transportation - Trains via Chattanooga**

### **Intermodal Trains**

- **I025** Bedford Park, IL to Jacksonville, FL, Daily
- **I154** UP/Memphis to Fairburn, GA, Daily
- **I155** Fairburn, GA to UP/Memphis, TN, Daily
- **I196** Savannah, GA to Bedford Park, IL, Daily

### **Manifest Trains**

- **M514** Waycross, GA to Nashville, TN, Daily
- **M582** Rocky Mount, NC to Nashville, TN, Daily
- **M583** Nashville, TN to Rocky Mount, NC, Fri-Wed
- **M584** Atlanta, GA to Nashville, TN, Daily
- **M585** Nashville, TN to Atlanta, GA Daily
- **M586** Wauhatchie, TN to Nashville, TN Daily
- **M587** Nashville, TN to Wauhatchie, TN Daily
- **M682** Hamlet, NC to Nashville, TN, Sundays
- **M683** Nashville, TN to Hamlet, NC, Thursdays

**Notes** – In addition to the above trains, several others have recently been making appearances through Chattanooga. Train M541 (Cincinnati to Waycross, GA) has been detouring as needed through Nashville and Wauhatchie from its normal routing via Corbin, KY. Also, daily automotive trains M216 (Nashville to Selkirk, NY) and counterpart M217 (Philadelphia, PA to Nashville) will run between Nashville and Wauhatchie when traffic warrants.



## Norfolk Southern Railway - Trains via Chattanooga, Tenn.

### Manifest Trains

Train #	Origin	Destination	Notes
123	Decatur, Ill.	Chattanooga, Tenn.	Daily
126	Chattanooga, Tenn.	Roanoke, Va.	Daily
127	Roanoke, Va.	Chattanooga, Tenn.	Daily
130	UP/New Orleans, La.	Chattanooga, Tenn.	Daily
142	Birmingham, Ala.	Elkhart, Ind.	Daily
143	Elkhart, Ind.	Inman Yard/Atlanta	Daily
152	Valdosta, Ga.	Chattanooga, Tenn.	Daily
167	St. Louis, Mo.	Chattanooga, Tenn.	Daily
168	Chattanooga, Tenn.	St. Louis, Mo.	Daily
170	Chattanooga, Tenn.	Conway, Pa.	Daily
171	Conway, Pa.	Chattanooga, Tenn.	Daily
173	Danville, Ky.	Sheffield, Ala.	Tue-Sat
174	Macon, Ga.	Elkhart, Ind.	Daily
177	Calumet Yard/Chicago	Chattanooga, Tenn.	Daily
178	Birmingham, Ala.	Bellevue, Ohio	Daily
179	Bellevue, Ohio	Birmingham, Ala.	Daily
183	Chattanooga, Tenn.	Calvert, Ala.	Daily
188	East Point, Ga.	Danville, Ky.	Daily
189	Detroit, Mich.	East Point, Ga.	Daily
196	Chattanooga, Tenn.	Pt. Wayne, Ind.	Daily
117	Knoxville, Tenn.	Uniontown, Ala.	Mon-Tue, Thu-Sat Trash Loads
127	Uniontown, Ala.	Knoxville, Tenn.	Sun-Tue, Thu-Fri Trash Empties
157	Allentown, Pa.	Birmingham, Ala.	Daily
167	Birmingham, Ala.	Allentown, Pa.	Daily
18E	Westlake (Jacksonville), Fla.	Princeton, Ind.	Daily
312	New Orleans, La.	Chattanooga, Tenn.	Daily
345	Chattanooga, Tenn.	UP/New Orleans, La.	Daily
350	Chattanooga, Tenn.	Knoxville, Tenn.	Daily
362	Sheffield, Ala.	Chattanooga, Tenn.	Daily
367	Chattanooga, Tenn.	Savannah, Ga.	Daily
368	Savannah, Ga.	Chattanooga, Tenn.	Daily
369	Chattanooga, Tenn.	Valdosta, Ga.	Daily
370	Inman Yard/Atlanta	Chattanooga, Tenn.	Daily
371	Chattanooga, Tenn.	Inman Yard/Atlanta	Daily
372	Doraville, Ga.	Chattanooga, Tenn.	Daily
373	Chattanooga, Tenn.	Doraville, Ga.	Daily

### Intermodal & Automotive Trains

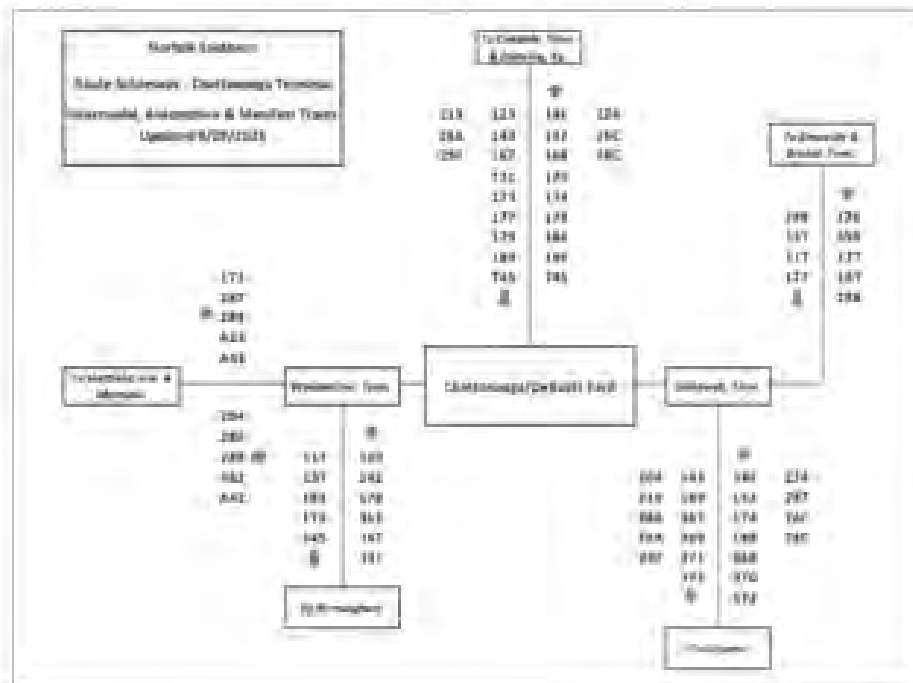
Train #	Origin	Destination	Notes
204	UP/Memphis, Tenn.	Inman Yard/Atlanta	Daily
224	Inman Yard/Atlanta	Kansas City, Mo.	Daily
219	Kansas City, Mo.	East Point, Ga.	Daily
286	Rossville, Tenn.	Inman Yard/Atlanta	Daily
287	Jacksonville, Fla.	Rossville, Tenn.	Daily
288	Rossville, Tenn.	Rutherford, Pa.	Daily
289	Rutherford, Pa.	Rossville, Tenn.	Daily
26C	Jacksonville, Fla.	Calumet Yard/Chicago	Daily, Hot UPS Traffic
28C	Inman Yard/Atlanta	Calumet Yard/Chicago	Daily
29A	Calumet Yard/Chicago	Inman Yard/Atlanta	Daily
29F	Calumet Yard/Chicago	FEC/Jacksonville, Fla.	Daily, Hot UPS Traffic

### Primary Unit Trains via Chattanooga

400/500 Series - Grain, Midwest to Southeast, Even # Loads, Odd # Empties, several per week
60C - Steel Slab Loads, Indiana Harbor, Ind. to Calvert, Ala., a couple per week
61C - Steel Slab Empties, Calvert, Ala. to Indiana Harbor, Ind., a couple per week
64Q - Ethanol Loads, Decatur, Ill. To FEC/Jacksonville, Fla., as needed
65Q - Ethanol Empties, FEC/Jacksonville to Decatur, Ill., as needed
732, 734, 736, 738 - Coal Loads, BNSF/Memphis to Georgia Power/Scherer, Ga., several per week
733, 735, 737, 739 - Coal Empties, Scherer, Ga. to BNSF/Memphis, several per week
722 - Coal Loads, BNSF/Memphis to TVA/Kingston, Tenn., a couple per week
732 - Coal Empties, TVA/Kingston, Tenn. to BNSF/Memphis, a couple per week

### Local Trains

Train #	Origin	Destination	Notes
A23	Chattanooga, Tenn.	Sheffield, Ala.	Daily Road Switcher
A42	Decatur, Ala.	Chattanooga, Tenn.	Daily Road Switcher
A43	Chattanooga, Tenn.	Decatur, Ala.	Daily Road Switcher
AC01	Chattanooga, Tenn.	Alton Park, Tenn.	Mon-Fri, handles CCKV/TVRM Traffic
AC10	Chattanooga, Tenn.	Tyner, Tenn.	Daily Turn Local
AC18	North Chattanooga, Tenn.	Red Bank, Tenn.	Mon-Fri Turn Local
AC34	Chattanooga, Tenn.	Wauhatchie, Tenn.	Daily CSA Interchange Turn
AC48	Chattanooga, Tenn.	Tyner, Tenn.	Mon-Fri TVRM Turn for VW Traffic
T38	Chattanooga, Tenn.	Charleston, Tenn.	Daily Turn Local
T45	Chattanooga, Tenn.	Dandale, Tenn.	Daily Turn Local
T88	North Chattanooga, Tenn.	Chattanooga, Tenn.	Sun-Thru Turn Local





# The Railroads of Chattanooga



## CSXT HERITAGE UNITS



Dan Davidson



Jonathan Konopka





Dan Davidson



Roger Smith





Justin Shaw



Justin Shaw





The NC&SL heritage unit at Martin, Kentucky Yard – Everett Young



Everett Young



Everett Young



1008 racing thru Weedsport, New York, with the NYC Heritage in the lead on a snowy November night in Upstate New York.- Justin Shaw





CSX I008 with the Bitter&Overcold Heritage in the lead, otherwise known as the Baltimore and Ohio on this cold night in Palmyra, NY. – Justin Shaw



Mike Gertner



## ALONG THE CSXT TRACK



Fresh out of the CSX Huntington SD70MACe rebuild program, CSX 4714 leads manifest freight M692 as it heads up the Big Sandy Subdivision. The train splits the pair of C&O bracket signals at East Point, Kentucky, as a tiny hint of sun tries to break through the clouds. Joseph Cermak



A CSXT coal train is seen crossing the Big Sandy River from Kenova, West Virginia, into Kentucky. Next stop is Russell Yard. Track in the foreground is the start of the Big Sandy Subdivision, Catlettsburg to Elkhorn City. Joseph Cermak





I took this photo in 2019. It is a composition of three photos taken over an hour's period by my tripod camera. First shot was of NS 3485, then of CSXT 720, and finally of CSXT 907. Then the magic of photo shop and a photo of an event that did not happen. Casey Thompson



With coal loads from Grafton bound for Brice, North Carolina, CSX C760 heads south on the Big Sandy Subdivision behind an AC4400, SD70MACe, and AC44CWM. As the train rolls south of Louisa, Kentucky, it crosses the Levisa Fork of the Big Sandy River just north of RB Cabin. Joseph Cermak





On November 14, 2025, the Forest Hill Flyover in Chicago opened. Part of the CREATE Program, the flyover eliminated two CSXT diamonds crossing Union Pacific and METRA track.  
 – CSXT Photo



L321 in Sterling, Ohio, December 2, 2025 – Roger Smith





Aaron Bryant

XX

<div> <div>CSX</div> <div>TRANSPORTATION</div> </div>		Condemning Limits	
EQUIPMENT GROUP			
SAFETY APPLIANCE DEFECTS		F.R.A.	A.A.R.
Safety Railings	Minimum Clearance	2½"	2½"
Handhold/Ladder Tread	Minimum Clearance	2"	2"
Handhold/Ladder Tread	Maximum Spacing	19"	19"
Hand Brake Wheel/Lever	Minimum Clearance	4"	4"
Coupler Height	Empty	31½"/34½"	32½"/34½"
Coupler Height	Load	31½"/34½"	31½"/33½"
Uncoupling Lever	Anti-Creep Clearance	0"	¼" - ½"
Sill Step	Maximum Distance to top of Rail	24"	24"
Sill Step	Maximum Distance to Bottom of Ladder Tread	21"	21"
Sill Step	Maximum Distance Inside Face of Car	4"	4"
Vertical Plane Clearance	Hand Brake Wheel	4"	4"
Vertical Plane Clearance	Brake Step	4"	4"
Vertical Plane Clearance	End Platform	6"	6"
Vertical Plane Clearance	End Ladder	12"	12"
AIR BRAKE LIMITS			
Piston Travel 10" x 12"	(Body Mounted Cyl.)	7"-9"	7"-9"
Brake Shoe Wear	(Composition, Hi Frct.)	To Backing Plate	3/8"
Brake Shoe Wear	Cast Iron, H.P.)	To Backing Plate	1/2"
Brake Rod Wear	(Original Diameter)	50%	

# CSX Locomotive Painting Guide

## Styling & Painting

## Remarks

### Floquil:

Gray	#110012	Reefer Gray, plus 10% Black
Blue	#110151	D&H Blue
Yellow	#110033	Railbox Yellow
Black		Engine Black

### Scalecoat:

Gray	#41	E-L Gray, plus 10% Black
Blue	#9	D&H Blue
Yellow	#10	D&H Yellow
Black		Engine Black

### Polly-S:

Gray	#410012	Reefer Gray
Blue	#410058	Blue
Yellow	#410031	Reefer Yellow
Black		Black

Lettering style of CSX is "Lubalin Graph Bold"

Side Logo: CSX is 55 inches high

End logo: CSX is 20 inches high

Numerals on the side of the cab are 16 inches high and are the "Helvetica Medium" font

Diagonal wrap of cab area is a 60 degree angle

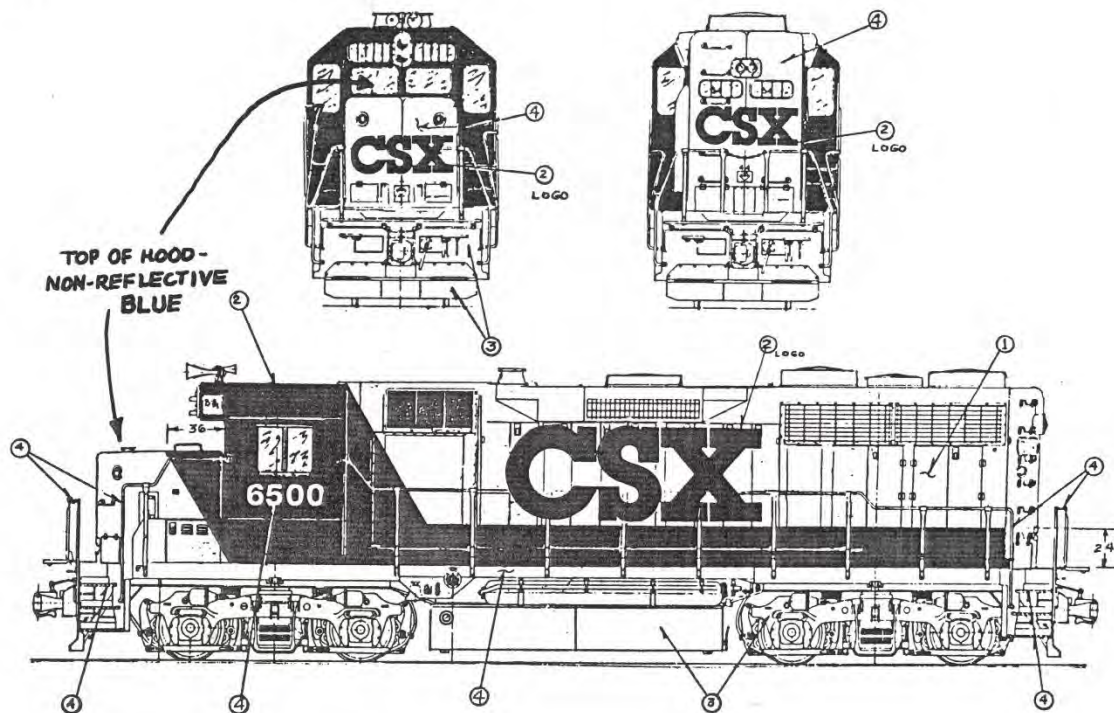
Grabirons to be gray except at corner stairwells

Red paint used on fuel sight glass holder, fuel cap, emergency fuel cutoff switch and MU plug cover.

Model type is stenciled in yellow under numerals on side of cab.

White stencil paint is used for marking gear ratios on each truck as well as numbering air hoses.

- ① Grey
- ② Blue
- ③ Black
- ④ Yellow





## TWO FAMILY LINE SURVIVORS

David Baer

The Family Lines paint scheme disappeared more than 40 years ago when the CSXT merger lowered the Family Lines flag. Interestingly, the Family Lines paint remains intact on freight cars, which have been sold by CSXT. The Reading, Blue Mountain and Northern has picked up several covered hoppers which remain in Family Lines paint, re-numbered and re-lettered RBMN. On October 5, 2025, RBMN 10142 sits at the west end of Norfolk Southern's Conway Yard in Freedom, Pennsylvania, with its Family Lines paint scheme mostly intact. Freedom, Pennsylvania, is directly across the Ohio River from CSXT's Pittsburgh Subdivision with the CSXT hidden behind the buildings across the Ohio River in the background. Working as a Conway Yard puller assignment is one of two Norfolk Southern Pennsylvania assigned ECO slug sets, in the special NS ECO paint scheme, GP33ECO 6727 and RP-M4C slug 659.

In the consist of CSXT westbound M369 on September 13, 2025, was VWCX 250296, still in good Family Lines paint, taken at West Aliquippa, Pennsylvania. The "Fam" letters in Family Lines have been painted over at some point, while the rest of the lettering is still intact. While the car has been re-lettered, the car retains its Family Line number. VWCX has several covered hoppers still operating in Family Lines paint.



**RBMN 10142 sits at the west end of Norfolk Southern's Conway Yard in Freedom, Pennsylvania, with its Family Lines paint scheme mostly intact.**



VWCX 250296 is seen still in Family Lines paint, at West Aliquippa, Pennsylvania.

XX

 <b>2025 SCHEDULE</b>	<b>KENTUCKY</b>	
	Shelby	6:00 a.m.
	Marrowbone	6:20 a.m.
	Elkhorn City	7:05 a.m.
	<b>VIRGINIA</b>	
	Toms Bottom	7:45 a.m.
	Haysi	8:07 a.m.
	Clinchco	8:40 a.m.
	Fremont	9:08 a.m.
	Dante	10:08 a.m.
	St. Paul	10:53 a.m.
	Dungannon	12:03 p.m.
	Ft. Blackmore	12:48 p.m.
	Kermit	1:48 p.m.
	Waycross	2:20 p.m.
	<b>TENNESSEE</b>	
	Kingsport	2:58 p.m.

The 2025 CSXT Santa Train schedule



Congratulations Erica,  
Jonathan, Lauryn, & Lindsey!

# Progressive Railroading “Rising Star” 2025 Honorees

CSX believes the future of railroading is driven by leaders who inspire, innovate, and make a lasting impact. Erica Baer, Jonathan Healy, Lauryn King, & Lindsey Valdivia exemplify these qualities through their outstanding contributions to our business, our ONE CSX team, and the communities we serve.







## Erica Baer

Erica's journey from Assistant Track Supervisor to Director, Human Resources Business Partner for Engineering and Mechanical is a testament to her bold leadership and commitment to excellence. Supporting nearly 10,000 employees, she drives strategic talent development, fosters a strong workplace culture, and champions meaningful change. Known for her tireless advocacy and innovative problem-solving, Erica exemplifies CSX's core values and inspires her colleagues every day.



## Jonathan Healy

Jonathan, Director of Sales, is a powerhouse in the U.S. export coal market, managing over \$1 billion in revenue and serving as a trusted expert for producers and trade houses. His quick thinking and collaborative approach have preserved vital customer relationships during critical moments. A dedicated mentor, Jonathan shares his expertise with interns and management trainees, shaping the next generation of railroad professionals.



## Lauryn King

Lauryn, Senior Sales Manager, is a trailblazer at CSX, known for her strategic leadership. She has delivered double-digit volume growth across a 150-customer portfolio and secured thousands of incremental carloads by targeting small customers in key markets. Lauryn is also a passionate mentor and community advocate, empowering others and championing progress.



## Lindsey Valdivia

Lindsey, Lead Senior Software Engineer for Product Engineering, is a driving force behind CSX's digital transformation. With over 12 years of experience in the rail industry, she has led major technology initiatives that have enhanced operations, improved customer experience, and delivered lasting value. Beyond her technical leadership, Lindsey is a dedicated mentor to young engineers and a passionate advocate for community engagement, leaving a meaningful impact across our network.

[csx.com](https://www.csx.com)